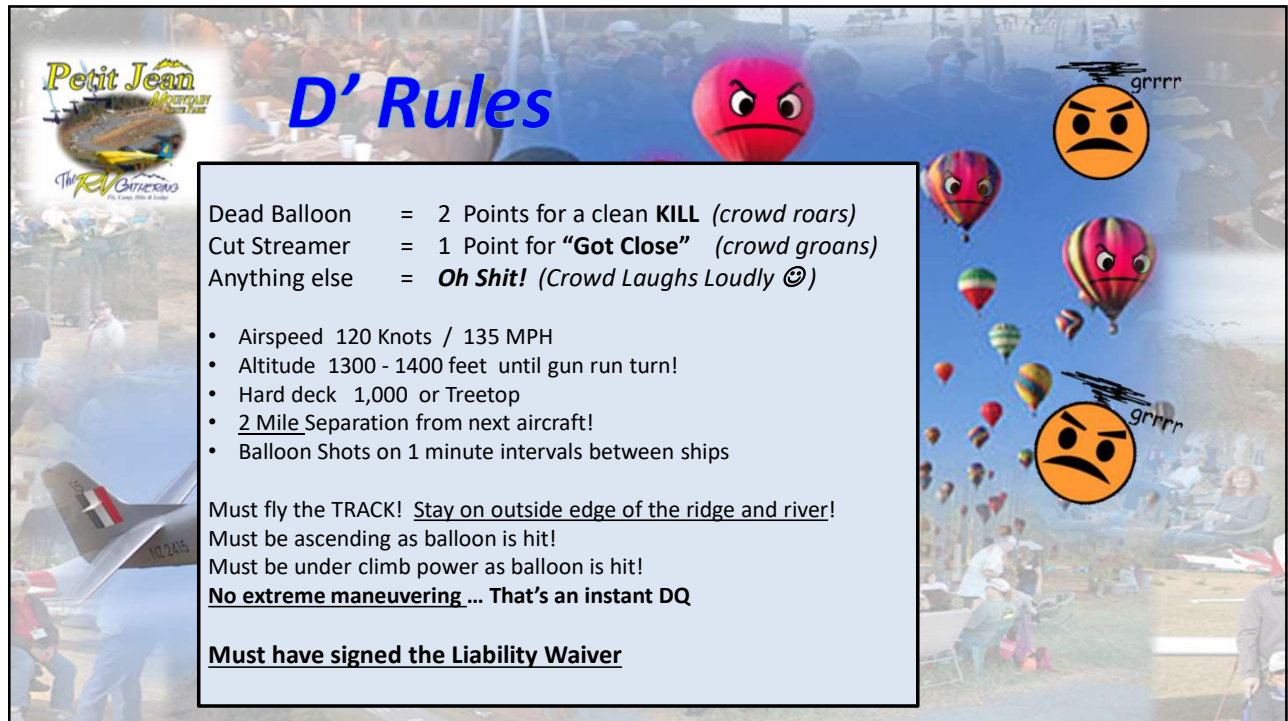





1



2




D'Way it's done!

Take off at 60 Second Intervals
Maintain 2 mile visual or audible separation!



Cruise Mode:

- You must fly the track ... know your checkpoints!
- Manage your airspeed Fly the track!
- Maintain constant altitude for visual safety.
- Minor S'Turns across track are acceptable.
- Call for release crossing approach "Kill Zone"



ATTACK MODE:

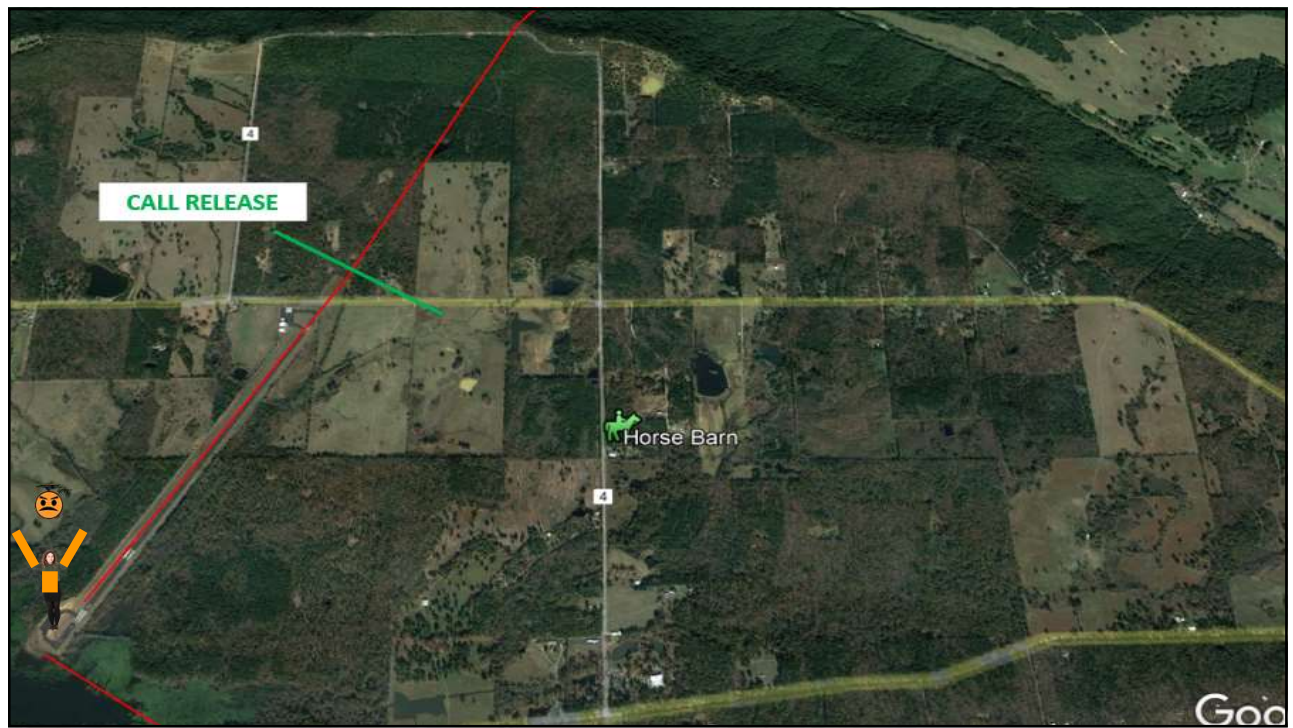
- Do not descend until you are in the airport environment (Airport 923')
- Do not descend below the tops of the trees
- Expect Balloon to be slightly higher than you 100-200 ft... try to skylight it!
- Apply climb power at or slightly before the threshold
- Attack in a climbing attitude
- Minor climbing left turn to ridgeline after Bust or Blunder ☺
- SLOW Down to 135 mph / 120 Knots

3



4



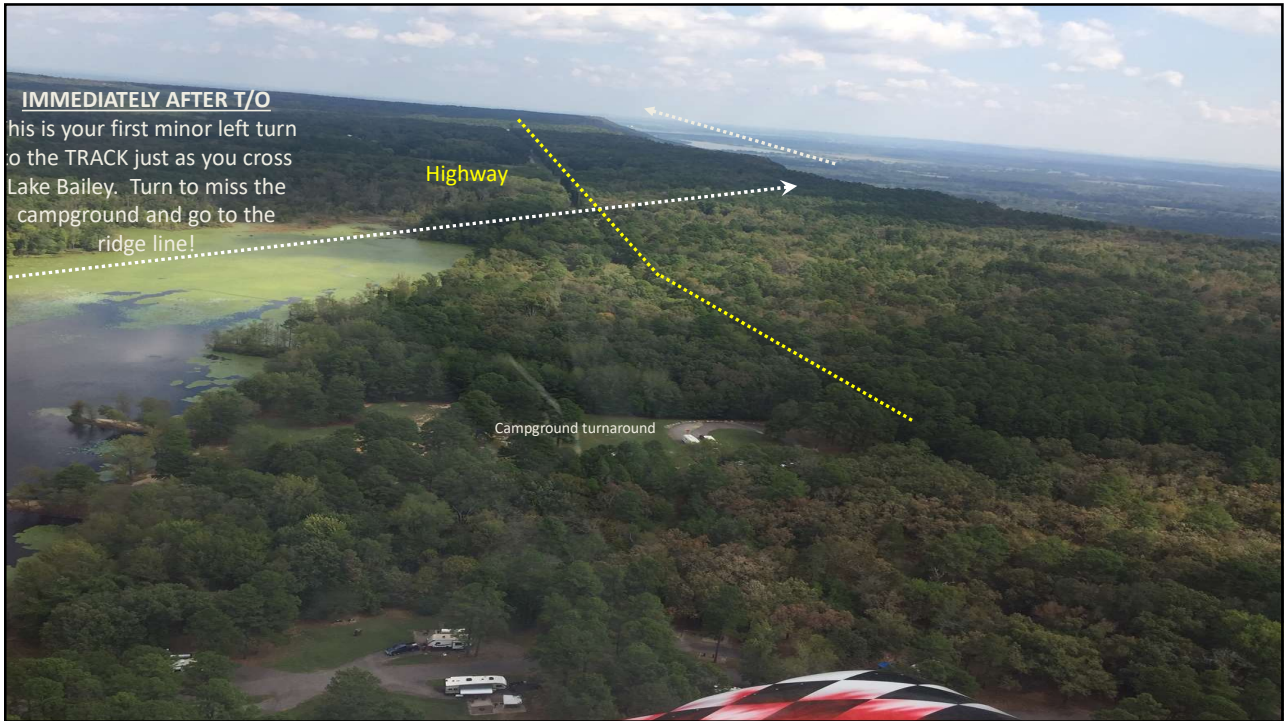
5



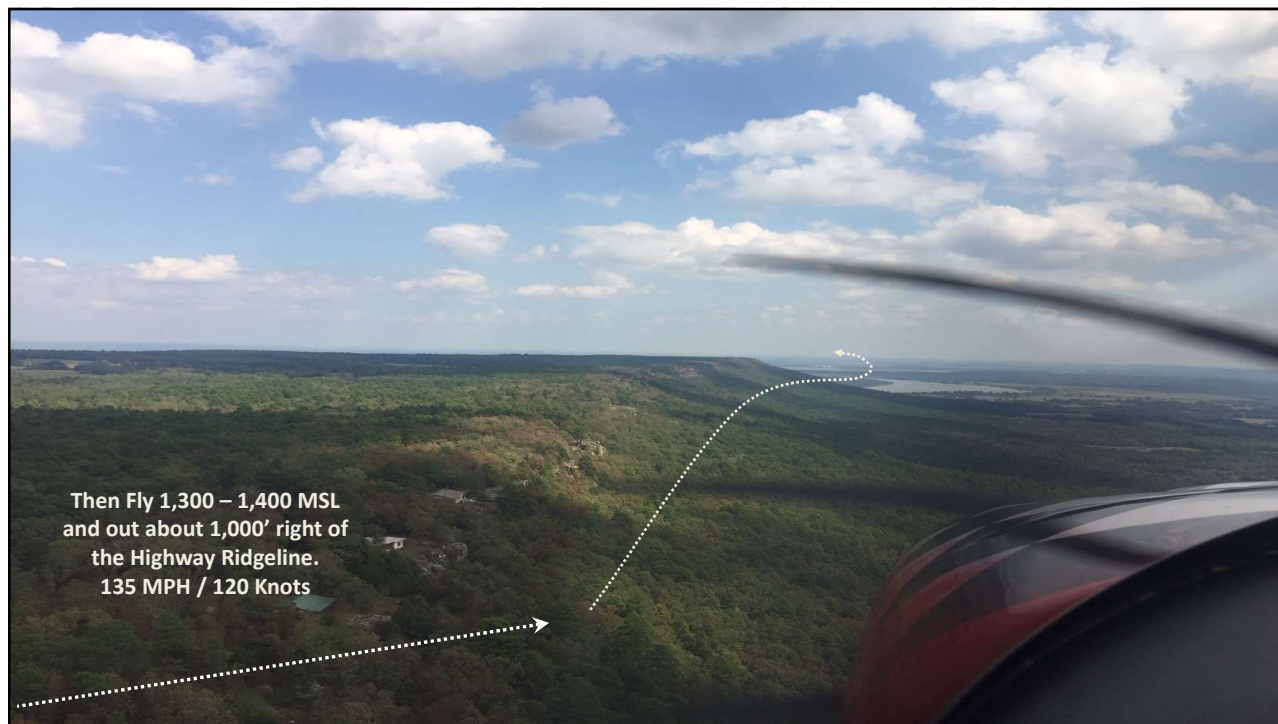
6



7



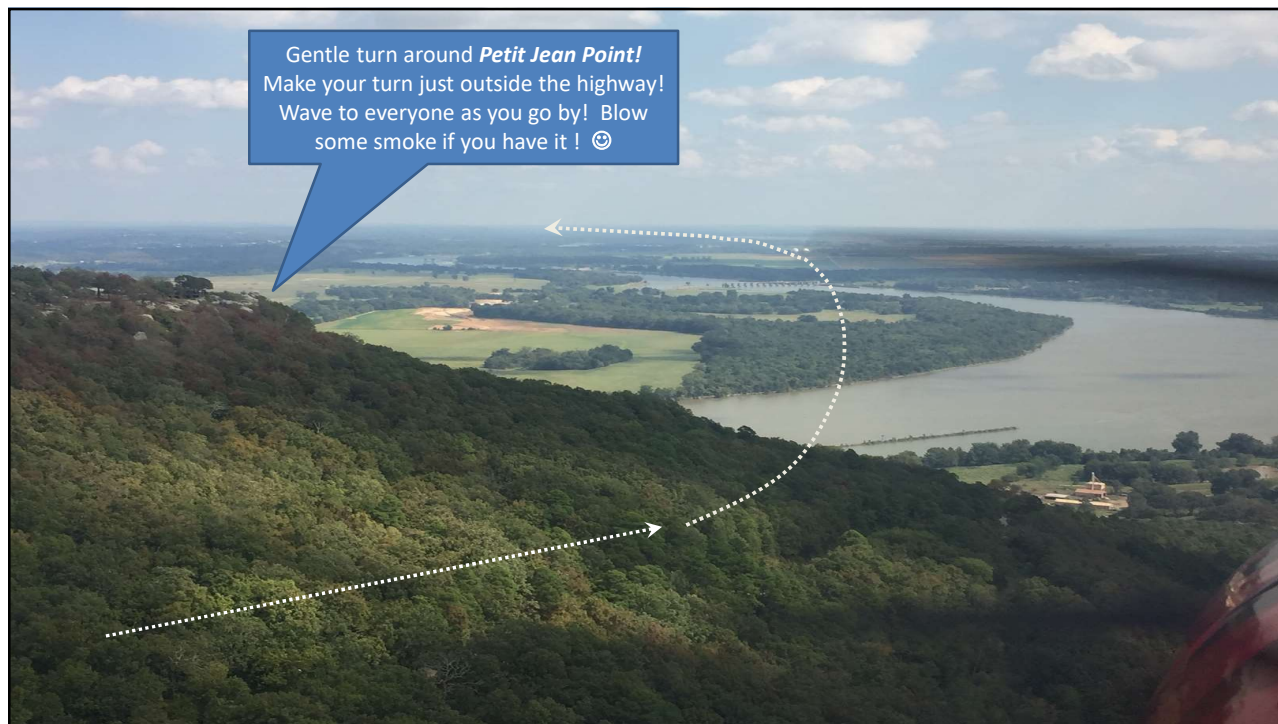
8



9



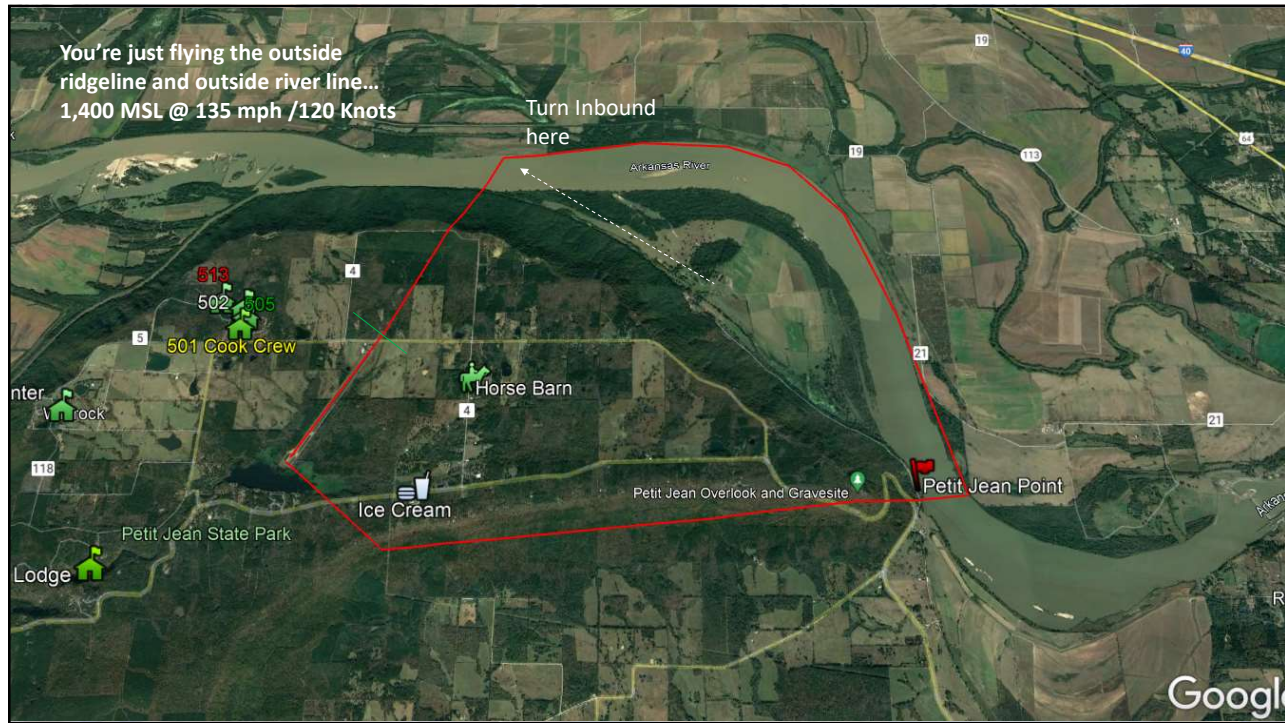
10



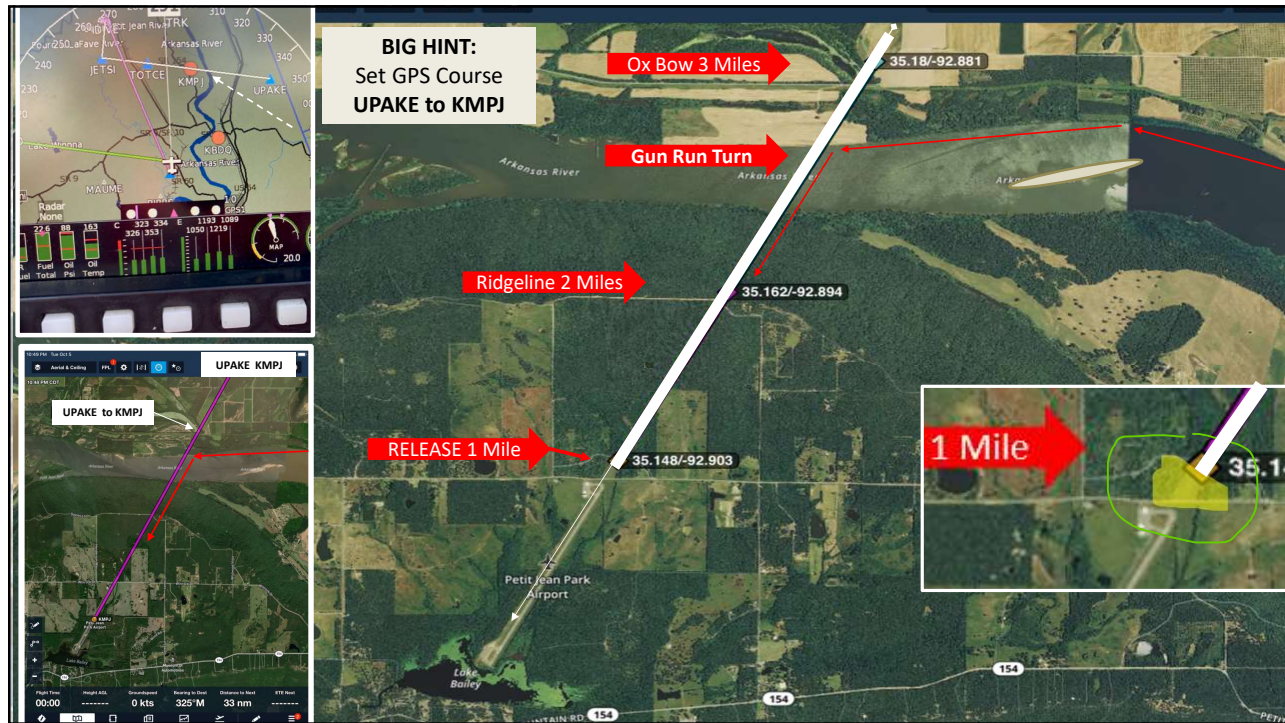
11



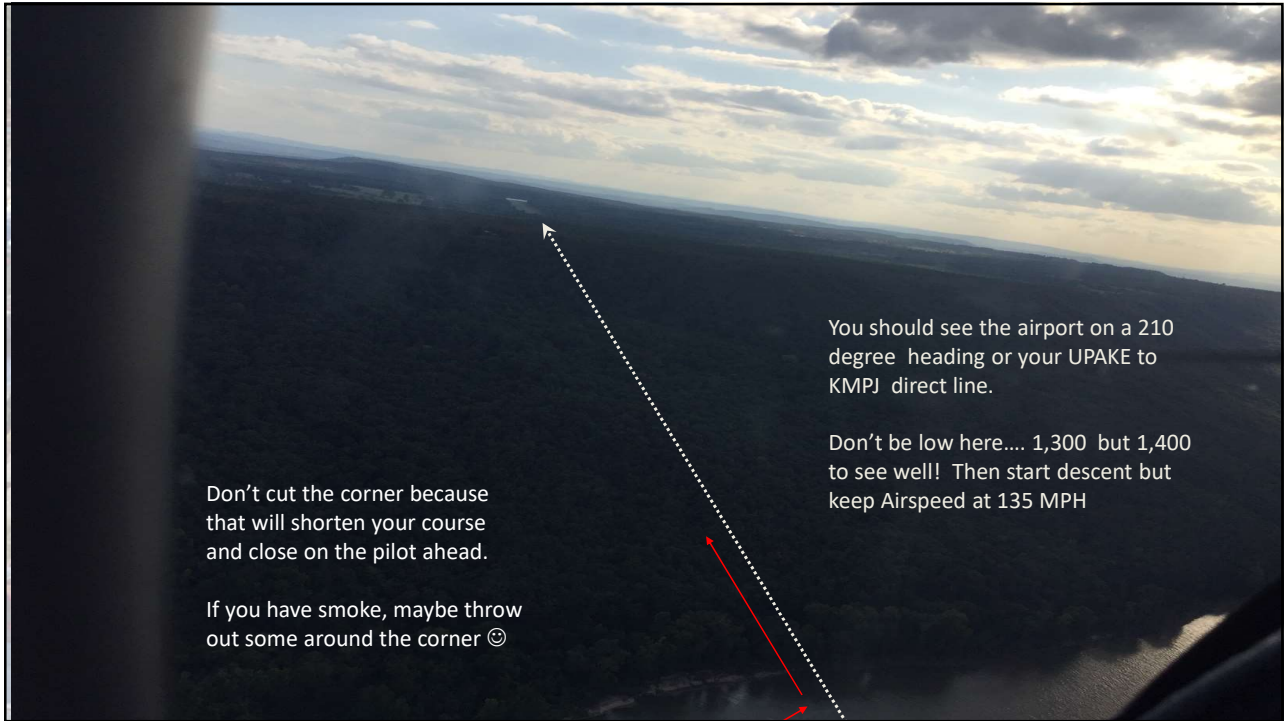
12



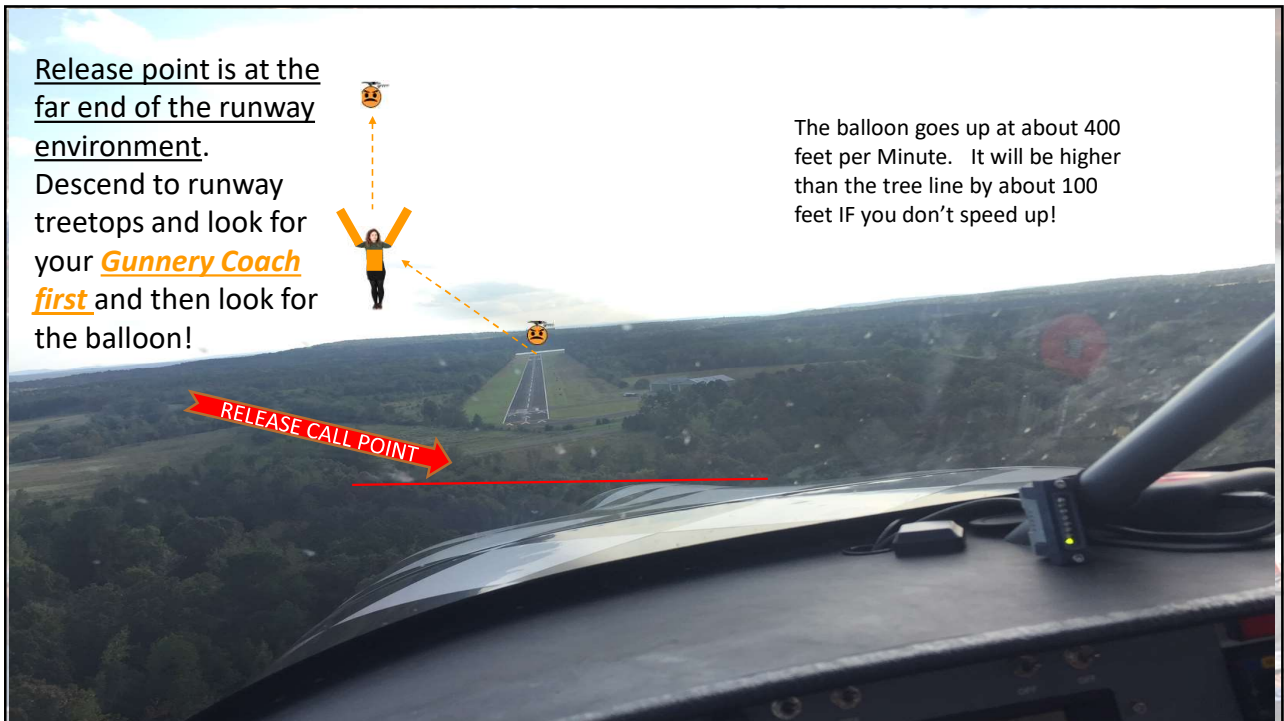
13



14



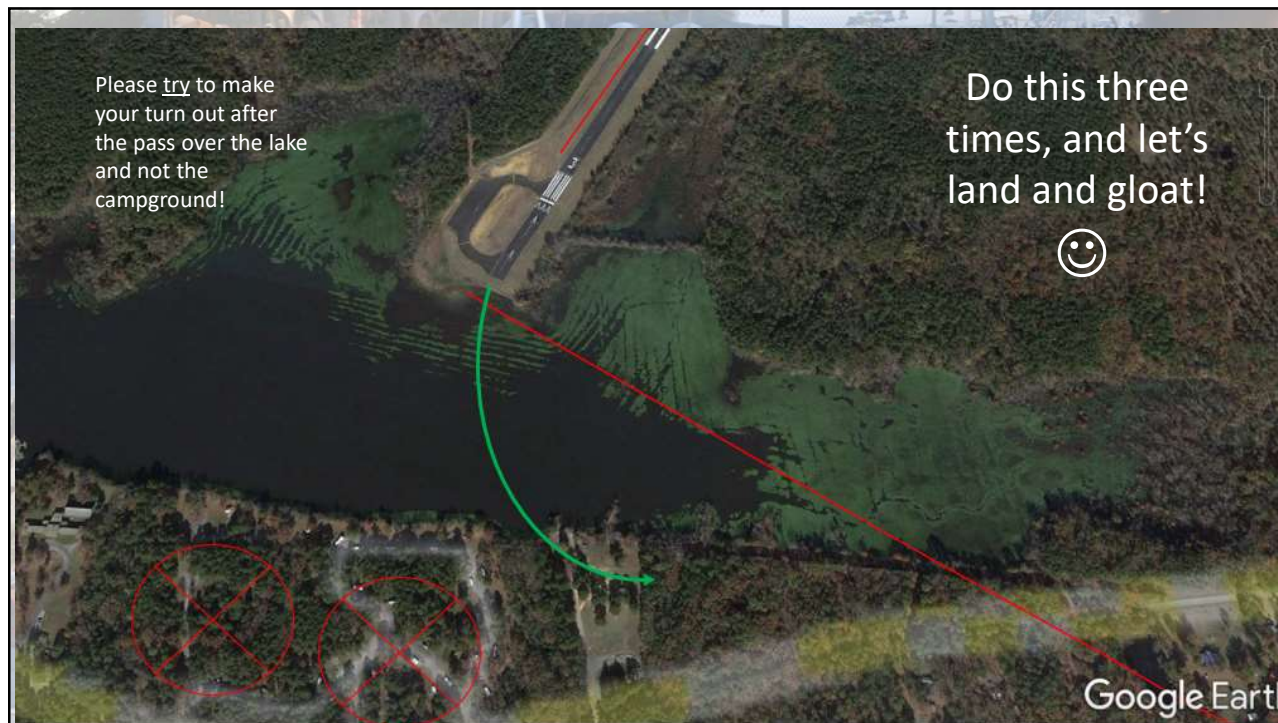
15



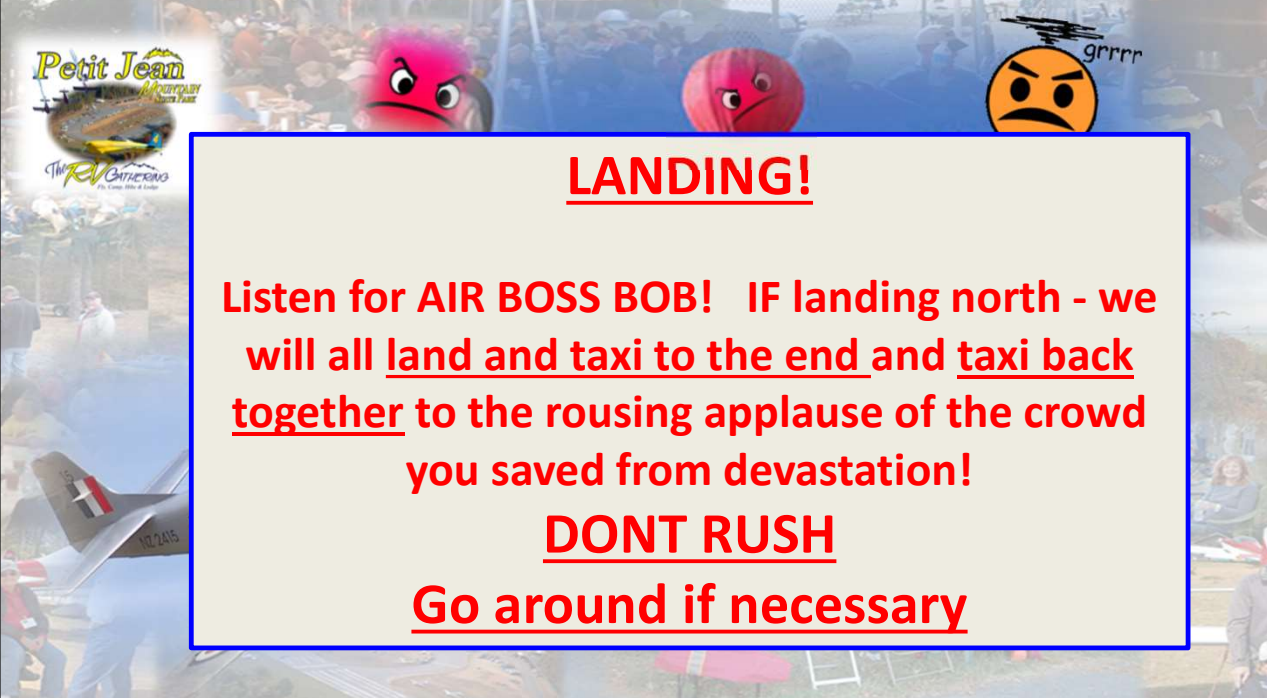
16



17



18



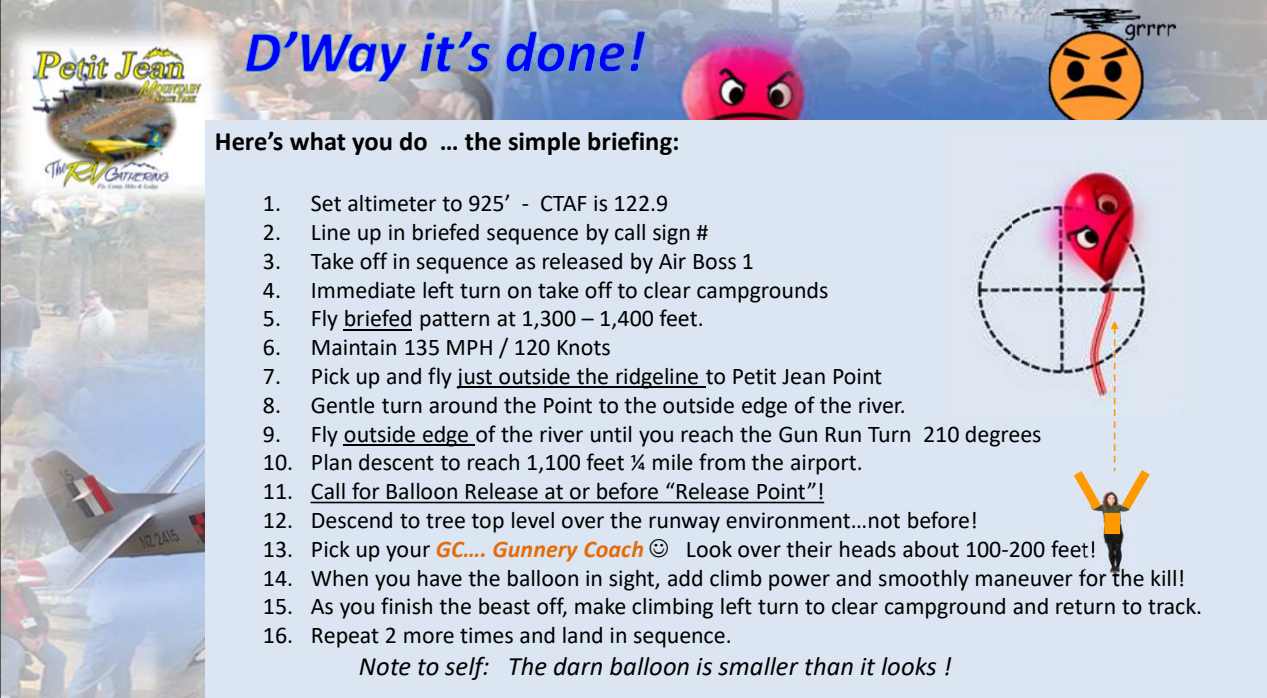
LANDING!

Listen for AIR BOSS BOB! IF landing north - we will all land and taxi to the end and taxi back together to the rousing applause of the crowd you saved from devastation!

DONT RUSH

Go around if necessary

19

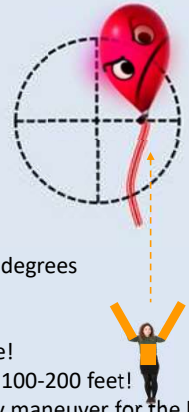


D'Way it's done!

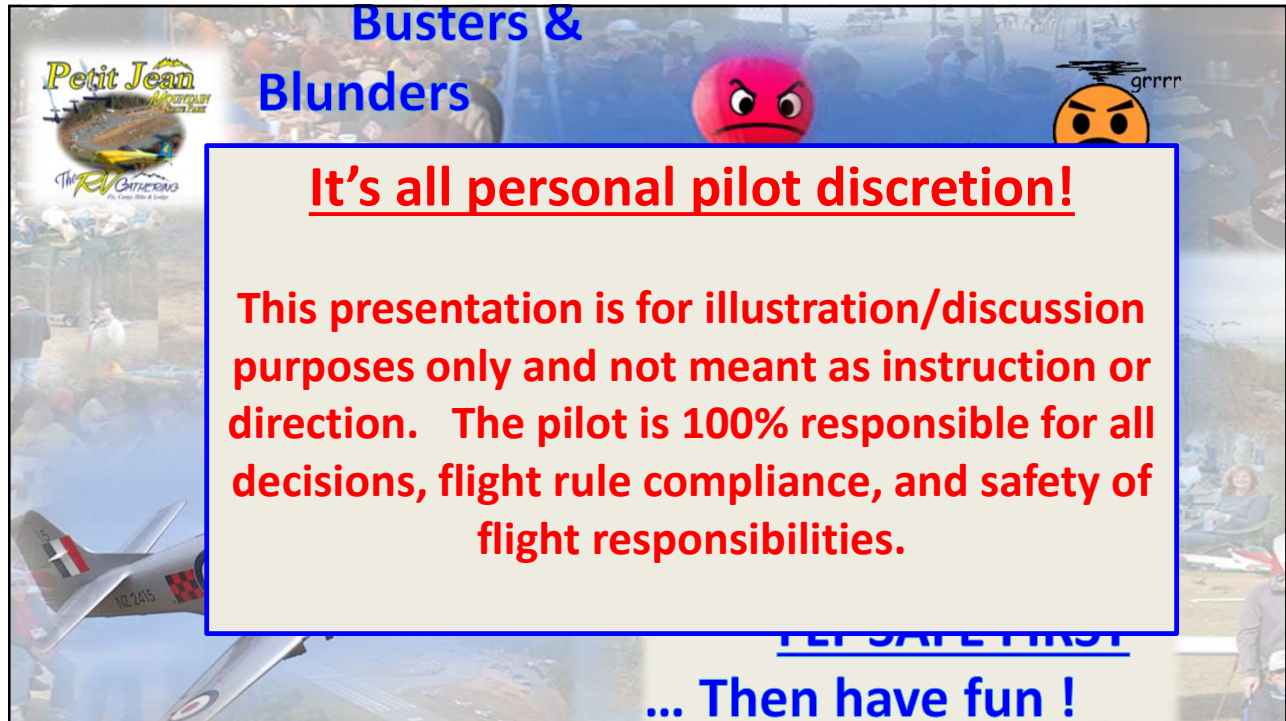
Here's what you do ... the simple briefing:

1. Set altimeter to 925' - CTAF is 122.9
2. Line up in briefed sequence by call sign #
3. Take off in sequence as released by Air Boss 1
4. Immediate left turn on take off to clear campgrounds
5. Fly briefed pattern at 1,300 – 1,400 feet.
6. Maintain 135 MPH / 120 Knots
7. Pick up and fly just outside the ridgeline to Petit Jean Point
8. Gentle turn around the Point to the outside edge of the river.
9. Fly outside edge of the river until you reach the Gun Run Turn 210 degrees
10. Plan descent to reach 1,100 feet ¼ mile from the airport.
11. Call for Balloon Release at or before "Release Point"!
12. Descend to tree top level over the runway environment...not before!
13. Pick up your **GC... Gunnery Coach** ☺ Look over their heads about 100-200 feet!
14. When you have the balloon in sight, add climb power and smoothly maneuver for the kill!
15. As you finish the beast off, make climbing left turn to clear campground and return to track.
16. Repeat 2 more times and land in sequence.

Note to self: The darn balloon is smaller than it looks !



20



Busters & Blunders

It's all personal pilot discretion!

This presentation is for illustration/discussion purposes only and not meant as instruction or direction. The pilot is 100% responsible for all decisions, flight rule compliance, and safety of flight responsibilities.

LET SAFETY FIRST

... Then have fun !